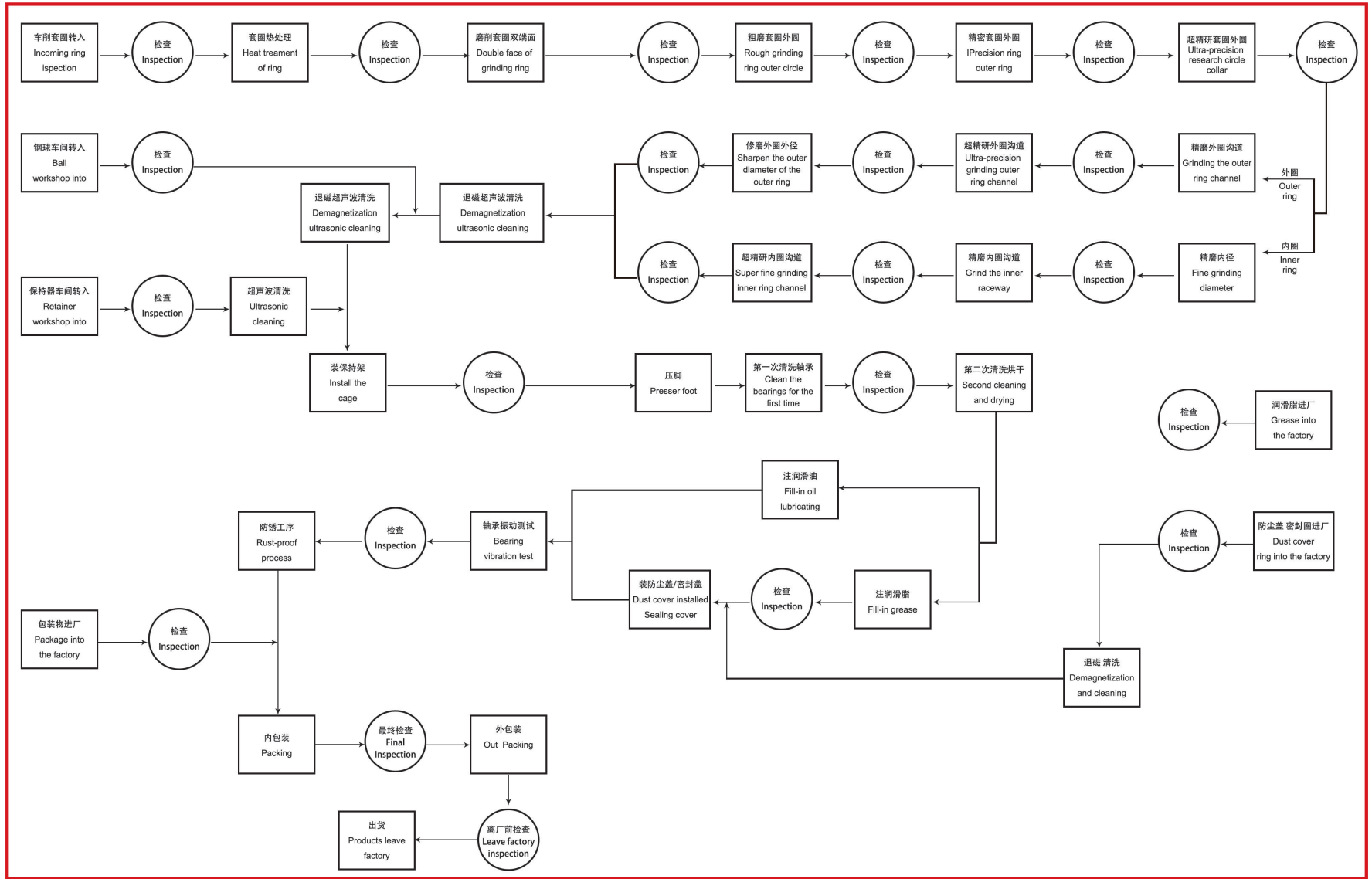
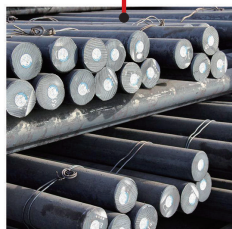




申锡轴承生产工艺流程见图【中文】
PROCESS FLOW OF BEARING PRODUCTION



严谨的生产细节 成就了申锡轴承的大承载力!



原材料

◆ 千挑万选的
优质钢材

大厂钢材
内部杂质少
组织排列有序
轴承承载力更大

◆ High-quality steel

Dachang steel
Internal impurities less
Organized and organized
Bearing capacity greater



热处理

◆ 全球最先进的
淬火技术

贝氏体淬火
内部金相组织良好
硬度从内到外都是国标
均匀的承载力比普通淬火更好

◆ Advanced quenching
technology

Bainite quenching
Internal metallographic
well-organized
Hardness from the inside
out are GB



车/磨加工

◆ 先进的车磨床技术

精密的车磨工序
套圈的精度接近零
套圈的椭圆度接近零
更均匀的承受大承载力

◆ Advanced car
grinding technology

Precise car grinding process
Ferrule accuracy / ovality is
near zero
Bearing capacity greater



滚子

◆ 严格把控的滚子

无锡原厂滚子精度高
轴承滚子承载力更均匀到力
普通滚子精度不高, 受力不均匀

◆ High quality raw
material suppliers

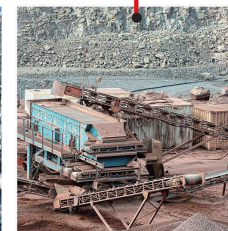
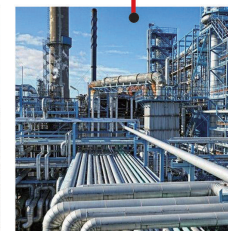
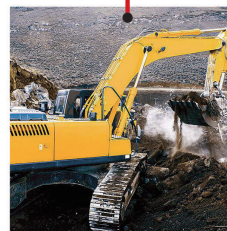
Wuxi original high precision
roller
Bearing roller bearing capacity
more evenly to force

产品应用

Product Applications

- ◆ 流体设备
- ◆ 冶金设备
- ◆ 矿山设备
- ◆ 工程机械
- ◆ 纺织机械
- ◆ 通用机械
- ◆ 农业机械
- ◆ 粮食机械
- ◆ 能源机械

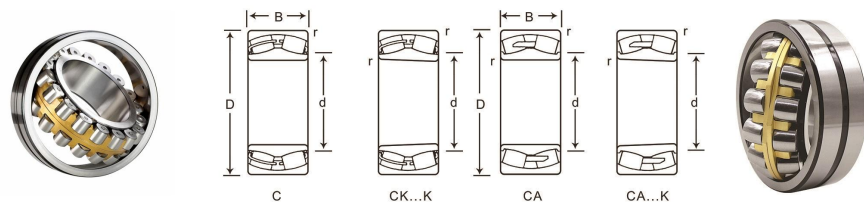
- ◆ Fluid equipment
- ◆ Metallurgical equipment
- ◆ Mining machinery
- ◆ Engineering machinery
- ◆ Textile machinery
- ◆ General Machinery
- ◆ Agricultural machinery
- ◆ Cereal and grain processing machinery
- ◆ Energy machinery





主要尺寸				额定负荷		轴承代号		极限转速		安装尺寸			质量
Boundary dimensions				Load ratings		Bearing No.		Limiting speeds		Mounting dimensions(mm)			Mass
(mm)				(KN)				(r/min)					(kg)
d	D	B	rsmin	Cr	Cor	圆柱孔	圆锥孔	脂润滑	油润滑	min	max	max	
120	180	46	2.0	354	560	23024CA	23024CAK	1400	1800	130	170	2.0	4.3
	180	46	2.0	359	565	23024CC	23024CCK	1800	2200	130	170	2.0	3.98
	180	60	2.0	390	700	24024CC	24024CAK30	1500	2000	130	170	2.0	5.05
	180	60	2.0	391	700	24024CC	24024CCK	1500	2000	130	170	2.0	5.05
	200	62	2.0	321	589	23124MB	23124MBK	1100	1500	130	190	2.0	7.63
	200	62	2.0	531	780	23124CA	23124CAK	1300	1700	130	190	2.0	7.63
	200	62	2.0	530	780	23124CC	23124CCK	1400	1800	130	190	2.0	7.67
	200	80	2.0	645	1028	24124CA	24124CAK30	1400	1800	130	190	2.0	9.65
	200	80	2.0	645	1028	24124CC	24124CCK30	1400	1800	130	190	2.0	9.65
	215	58	2.1	352	582	22224MB	22224MBK	1300	1700	132	203	2.1	9.2
	215	58	2.1	520	730	22224CA	22224CAK	2500	2800	132	203	2.1	9
	215	58	2.1	520	730	22224CC	22224CCK	2500	2800	132	203	2.1	9.1
	215	76	2.1	660	968	23224CA	23224CAK	1300	1700	132	203	2.1	12
	215	76	2.1	668	984	23224CC	23224CCK	1300	1700	132	203	2.1	11.7
	260	86	3.0	664	1022	22324MB	22324MBK	1100	1500	134	246	2.5	22
	260	86	3.0	867	1154	22324CA	22324CAK	1700	2000	134	246	2.5	22
	260	86	3.0	870	1195	22324CC	22324CCK	1900	2200	134	246	2.5	22.2
130	200	52	2.0	278	626	23026MB	23026MBK	1100	1500	140	190	2.0	6.2
	200	52	2.0	383	644	23026CA	23026CAK	1200	1600	140	190	2.0	6.2
	200	52	2.0	386	649	23026CC	23026CCK	1700	2000	140	190	2.0	5.85
	200	69	2.0	472	852	24026CA	24026CAK30	1400	1800	140	190	2.0	7.55
	200	69	2.0	486	878	24026CC	24026CCK30	1400	1800	140	190	2.0	7.55
	210	64	2.0	492	812	23126CA	23126CAK	1300	1700	140	200	2.0	8.49
	210	64	2.0	496	826	23126CC	23126CCK	1300	1700	140	200	2.0	8.49
	210	80	2.0	585	1030	24126CA	24126CAK30	1200	1600	140	200	2.0	10.3
	210	80	2.0	603	1061	24126CC	24126CCK30	1300	1700	140	200	2.0	10.3
	230	64	3.0	420	729	22226MB	22226MBK	1200	1600	144	216	2.5	11.2
	230	64	3.0	625	864	22226CA	22226CAK	2000	2600	144	216	2.5	11.2
	230	64	3.0	625	867	22226CC	22226CCK	2200	2600	144	216	2.5	11.2
	230	80	3.0	748	1092	23226CA	23226CAK	1200	1600	144	216	2.5	14
	230	80	3.0	748	1112	23226CC	23226CCK	1200	1600	144	216	2.5	13.8
	230	93	4.0	744	1170	22326MB	22326MBK	950	1300	148	262	3.0	29

主要尺寸				额定负荷		轴承代号		极限转速		安装尺寸			质量
Boundary dimensions				Load ratings		Bearing No.		Limiting speeds		Mounting dimensions(mm)			Mass
(mm)				(KN)				(r/min)					(kg)
d	D	B	rsmin	Cr	Cor	圆柱孔	圆锥孔	脂润滑	油润滑	min	max	max	
130	280	93	4.0	970	1340	22326CA	22326CAK	1600	1900	148	262	3.0	28.5
	280	93	4.0	994	1380	22326CC	22326CCK	1600	1900	148	262	3.0	27.5
140	210	53	2.0	294	654	23028MB	23028MBK	950	1300	150	200	2.0	6.7
	210	53	2.0	444	719	23028CA	23028CAK	1100	1500	150	200	2.0	6.7
	210	53	2.0	450	760	23028CC	23028CCK	1600	1900	150	200	2.0	6.31
	210	69	2.0	488	895	24028CA	24028CAK30	1200	1600	150	200	2.0	8.01
	210	69	2.0	503	922	24028CC	24028CCK30	1300	1700	150	200	2.0	8.01
	225	68	2.1	410	623	21328MB	21328MBK	950	1300	152	213	2.1	10.9
	225	68	2.1	561	953	21328CA	21328CAK	1100	1500	152	213	2.1	10.9
	225	68	2.1	554	932	21328CC	21328CCK	1200	1600	152	213	2.1	10.2
	225	85	2.1	670	1200	24128CA	24128CAK30	1100	1500	152	213	2.1	12.5
	225	85	2.1	690	1236	24128CA	24128CCK30	1200	1600	152	213	2.1	12.5
	225	68	3.0	492	829	22228MB	22228MBK	1000	1400	154	236	2.5	14.5
	250	68	3.0	720	990	22228CA	22228CAK	1700	2200	154	236	2.5	14.5
	250	68	3.0	720	990	22228CC	22228CCK	1800	2200	154	236	2.5	14.2
	250	88	3.0	826	1320	23228CA	23228CAK	1000	1400	154	236	2.5	18.5
	250	88	3.0	836	1340	23228CC	23228CCK	1100	1500	154	236	2.5	18.1
	300	102	4.0	850	1380	22328MB	22328MBK	900	1200	158	282	3.0	36
	300	102	4.0	1140	1620	22328CA	22328CAK	1400	1500	158	282	3.0	34.5
	300	102	4.0	1164	1660	22328CC	22328CCK	1400	1700	158	282	3.0	34.6
150	225	56	2.1	338	790	23030MB	23030MBK	900	1200	162	213	2.1	8.14
	225	56	2.1	451	790	23030CA	23030CAK	1100	1400	162	213	2.1	8.14
	225	56	2.1	445	772	23030CC	23030CCK	1400	1800	162	213	2.1	7.74
	225	75	2.1	570	1070	24030CA	24030CAK30	1100	1400	162	213	2.1	10.6
	225	75	2.1	587	1100	24030CC	24030CCK30	1200	1500	162	213	2.1	10.1
	250	80	2.1	527	1110	23130MB	23130MBK	850	1100	162	238	2.1	16.1
	250	80	2.1	747	1267	23130CA	23130CAK	1000	1300	162	238	2.1	16.1
	250	80	2.1	760	1288	23130CC	23130CCK	1100	1400	162	238	2.1	15.7
	250	100	2.1	890	1600	24130CA	24130CAK30	1000	1300	162	238	2.1	19
	250	100	2.1	910	1650	24130CC	24130CCK30	1100	1400	162	238	2.1	19
	270	73	3.0	523	900	22230MB	22230MBK	1200	1700	164	256	2.5	18.5
	270	73	3.0	523	1330	22230CA	22230CAK	1800	2000	164	256	2.5	18.6



主要尺寸 Boundary dimensions (mm)				额定负荷 Load ratings (KN)		轴承代号 Bearing No.		极限转速 Limiting speeds (r/min)		安装尺寸 Mounting dimensions(mm)			质量 Mass (kg)
d	D	B	r	Cr	Cor	圆柱孔	圆锥孔	脂润滑	油润滑	da	Da	ra	
360	750	224	7.5	4900	8600	22372CA	22372CAK	400	500	392	720	6.0	466
380	560	135	5.0	2480	5000	23076CA	23076CAK	630	800	402	538	4.0	130
	560	180	5.0	3150	6800	24076CA	24076CAK30	480	600	402	538	4.0	153
	620	194	5.0	3400	7350	23176CA	23176CAK	400	500	402	598	4.0	244
400	600	148	5.0	2540	5900	23080CA	23080CAK	600	750	422	578	4.0	158
	600	200	5.0	3600	7800	24080CA	24080CAK30	450	560	422	578	4.0	202
	650	200	6.0	4080	7650	23180CA	23180CAK	380	480	428	622	5.0	275
	720	256	6.0	6140	11300	23280CA	23280CAK	340	430	428	692	5.0	353
	820	243	7.5	6940	11200	22380CA	22380CAK	380	450	428	792	6.0	650

带密封圈调心滚子轴承是一种两侧带骨架密封圈的闭式结构轴承。该轴承具有调心滚子轴承的功能之外，还具有内部运转环境优良的特点，有利于轴承的长寿命。广泛用于工程机械和电梯上。

With a self-aligning roller Spherical roller bearing is a two-sided belt skeleton Seal of the closed structure of the bearing. The bearing has a self-aligning roller Bearing the function, but also has an excellent internal operating environment Features that favor the bearing's long life. Widely used in engineering machine And on the elevator.



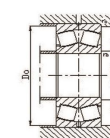
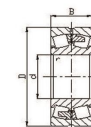
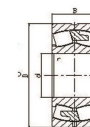
轴承代号 Bearing No.	主要尺寸 Boundary dimensions(mm)				极限转速 Limiting speeds (r/min)	额定负荷 Load ratings(KN)		质量 Mass (kg)
	d	D	B	rsmn		Cr	Cor	
BS2-2205-2CS	25	52	23	1	3600	49	44	0.26
BS2-2206-2CS	30	62	25	1	2800	64	60	0.34
BS2-2207-2CS	35	72	28	1.1	2400	86.5	85	0.52
BS2-2208-2CS	40	80	1.1	1.1	2200	96.5	90	0.57
BS2-2209-2CS	45	85	28	1.1	2000	102	98	0.66
BS2-2210-2CS	50	90	28	1.1	1900	104	108	0.70
BS2-2211-2CS	55	100	31	1.5	1700	125	127	1.00
BS2-2212-2CS	60	110	34	1.5	1600	156	166	1.13
BS2-2213-2CS	65	120	38	1.5	1500	193	216	1.6
BS2-2214-2CS	70	125	38	1.5	1400	208	228	1.8
BS2-2215-2CS	75	130	38	1.5	1300	212	240	2.10
BS2-2216-2CS	80	140	40	2	1200	236	270	2.40
BS2-2217-2CS	85	150	44	2	1100	285	325	3.00
BS2-2218-2CS	90	160	48	2	1000	325	375	3.7
BS2-2220-2CS	100	180	50	2.1	900	425	490	5.50
BS2-2222-2CS	110	200	63	2.1	800	560	560	7.60
BS2-2224-2CS	120	215	69	2.1	750	630	765	9.75
BS2-2308-2CS	40	90	38	1.5	1900	150	140	1.20
BS2-2309-2CS	45	100	42	1.5	1500	183	183	1.6
BS2-2310-2CS	50	110	45	2	1400	220	224	2.1
BS2-2311-2CS	55	120	49	2	1400	270	280	2.8
BS2-2312-2CS	60	130	53	2.1	1100	310	335	3.4
BS2-2313-2CS	65	140	53	2.1	1000	340	360	4.15
BS2-2314-2CS	70	150	60	2.1	900	400	430	5.1
BS2-2315-2CS	75	160	64	2.1	950	440	475	6.5
BS2-2316-2CS	70	170	67	2.1	800	490	540	7.2
22324-2CS	120	260	86	3	600	980	1120	23
23022-2CS	110	170	45	2	900	310	440	3.8
23024-2CS	120	180	46	2	850	355	510	4.2
23120-2CS	100	165	52	2	850	365	490	4.4
23122-2CS	110	180	56	2	800	430	430	5.75
23218-2CS	90	160	52.4	2	750	355	440	4.65
23220-2CS	100	180	60.3	2.1	700	475	600	6.85

轴承代号 Bearing No.	主要尺寸 Boundary dimensions(mm)				极限转速 Limiting speeds (r/min)	额定负荷 Load ratings(KN)		质量 Mass (kg)
	d	D	B	rsmn		Cr	Cor	
23222-2CS	110	200	69.8	2.1	640	600	765	9.85
23224-2CS	120	215	76	2.1	600	695	930	12
24015-2CS	75	115	40	1.1	950	173	232	1.55
24020-2CS	100	150	50	1.5	800	285	415	3.20
24022-2CS	110	170	45	2	670	415	620	5
24024-2CS	120	180	60	2	670	430	670	5.45
24120-2CS	100	165	65	2	670	455	640	5.65
24122-2CS	110	180	69	2	630	520	750	7.10
24124-2CS	120	200	80	2	560	655	950	10.5



振动机械专用轴承主要用于矿山机械装置和一些振动压力设备。例如：振动筛、压路机和锯齿形的切割机械等。

Vibration machinery bearings are mainly used for mining machinery and some vibration pressure equipment. Such as vibrating screens, rollers and sawtooth cutting machines.



主要尺寸 Boundary dimensions (mm)				额定负荷 Load ratings (KN)		轴承代号 Bearing No.	极限转速 Limiting speeds (r/min)		安装尺寸 Mounting dimensions(mm)			质量 Mass (kg)
d	D	B	r _{min}	C _r	C _{or}		脂润滑	油润滑	min	max	max	
40	90	33	1.5	127	146	22309MA/W33	4300	5300	52	78	1.5	1.044
45	100	36	1.5	153	179	22310MA/W33	3900	4800	56	91	1.5	1.044
50	110	40	2.0	195	226	22311MA/W33	3600	4500	60	100	2.1	1.927
55	120	43	2.0	226	268	22312MA/W33	3200	4000	65	110	2.1	2.461
60	130	46	2.1	262	313	22313MA/W33	3000	3800	72	118	2.1	3.088
65	140	48	2.1	285	340	22314MA/W33	2600	3400	77	128	2.1	3.705
70	150	51	2.1	330	420	22315MA/W33	2600	3200	82	138	2.1	4.501
75	160	55	2.1	380	475	22316MA/W33	2300	3000	87	148	2.1	5.552
80	170	58	2.1	420	535	22317MA/W33	2100	2800	92	158	2.1	6.537
85	180	60	3.0	462	591	22318MA/W33	2000	2600	99	166	2.5	7.542
90	190	64	3.0	518	677	22319MA/W33	1900	2400	104	176	2.5	9.056
95	200	67	3.0	568	744	22320MA/W33	1900	2300	109	186	2.5	10.43
100	215	73	3.0	659	875	22321MA/W33	1700	2100	114	201	2.5	13.34
110	240	80	3.0	795	1020	22322MA/W33	1500	1900	124	226	2.5	18.62
120	260	86	3.0	921	1195	22324MA/W33	1300	1800	134	246	2.5	23.17
130	280	93	4.0	1160	1560	22326MA/W33	1300	1700	148	262	3.0	28.78
140	300	102	4.0	1230	1700	22328MA/W33	1200	1600	158	282	3.0	36.18
150	320	108	4.0	1390	1800	22330MA/W33	1200	1500	168	302	3.0	43.35
160	340	114	4.0	1330	1810	22332MA/W33	800	1000	178	322	3.0	51.76
170	360	120	4.0	1470	1960	22334MA/W33	750	950	188	342	3.0	61.39
180	380	126	4.0	1620	2170	22336MA/W33	700	900	198	362	3.0	71.25
190	400	132	5.0	2000	2400	22338MA/W33	650	850	208	382	4.0	81.02